



VISTALITE® COATED GLASS

VISTALITE® SKY BLUE®

Vistalite® Sky Blue®: Performance Data for Monolithic Glass

| Glass Configuration | UV | Visible Light | | | | Solar Energy | | | | | | U Value W/M2K |
|---------------------|---------------|---------------|----------------------|---------------------|---------------|--------------|------------|--------------------|------|------|-----|---------------|
| | | % | % | % | % | % | % | % | % | % | % | |
| (MM) | Transmittance | Transmittance | Reflectance Outdoors | Reflectance Indoors | Transmittance | Reflectance | Absorption | Solar Factor EN410 | SHGC | SC | | |
| 6 | 18 | 44 | 16 | 29 | 33 | 17 | 50 | 0.51 | 0.50 | 0.58 | 5.7 | |

- Performance data is based on representative samples of factory production. Actual values may vary slightly due to variations in the production process.
 - Tabulated data is based on NFRC methodology using the LBL Windows 5.2 Software and where noted European methodology using WinDat WIS version 3.0.1 software.
 - SF = Solar Factor (EN410) also known as g-value.

Vistalite® Sky Blue®: Performance Data for IG Unit Glass (6mm / 16mm air space / 6mm)

| Vistalite® Sky Blue®+ | Visible light Transmission VLT | Visible light Reflectance | | SC | Solar Factor(g) EN 410 | U-Value Imperial | | U-Value EN 673 W/m²*K |
|--------------------------|--------------------------------|---------------------------|------|------|------------------------|------------------|--------|-----------------------|
| | | Ext. | Int. | | | Winter | Summer | |
| Trulite Clear | 40% | 17% | 30% | 0.45 | 0.39 | 2.80 | 2.70 | 2.70 |
| SG 500-Hard coat Low E#3 | 38% | 16% | 31% | 0.39 | 0.34 | 1.90 | 1.80 | 1.80 |
| Single Silver Low E#3 | 35% | 17% | 28% | 0.36 | 0.31 | 1.80 | 1.60 | 1.60 |

- Data considers 16mm airspace and based on NFRC & EN 673. Other glass thickness is available. See literature or visit www.sphinxglass.com for additional values

www.sphinxglass.com

15606



Licensed By
Vitro
Architectural Glass

Cairo Office:
 52 Corniche El-Nil, Sharifain Tower
 Maadi - Cairo - Egypt
 +202 252 58 005
 +202 252 60 506
 11728
 info@sphinxglass.com

Manufacturing Plant:
 Sadat City,
 Seventh Industrial Zone
 +204 826 25 220
 +204 826 25 225
 32897
 www.sphinxglass.com

QUIETLY NEUTRAL, WITH A HINT OF SHEEN



VISTALITE® COATED GLASS

Vistalite® subtly reflective color-enriched glass transmits generous levels of visible light and provides color neutrality, which amplifies and enriches the tint of the glass substrate underneath without a mirror-like appearance. More understated than traditional reflective glass. Vistalite® glass can be glazed with the reflective coating positioned on the second surface. The glass has improved performance and visible-reflectivity with an understated sheen. Available in two distinct tints—Sky Blue® and Euro Grey.

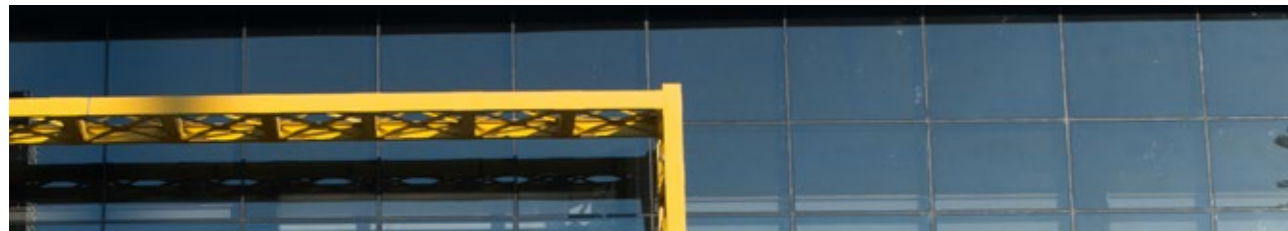
Vistalite® glass can be combined with Solarban solar control Low-E glass or SG 500 Low-E glass to achieve light-to-solar gain ratios of as high as 1.66.

For the detailed performance of thermal and mechanical properties, please review the Reflective Glass product data-sheet

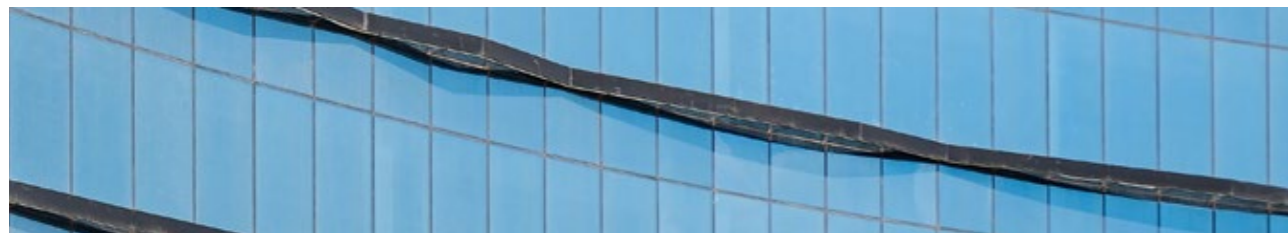
VISTALITE® CLEAR



VISTALITE® EURO GREY



VISTALITE® SKY BLUE®



VISTALITE® CLEAR

Vistalite® Clear : Performance Data for Monolithic Glass

| Glass Configuration | UV | Visible Light | | | | Solar Energy | | | | | U Value W/M2K |
|---------------------|---------------|---------------|----------------------|---------------------|---------------|--------------|------------|--------------------|------|------|---------------|
| Vistalite Clear | % | % | % | % | % | % | % | % | % | % | |
| (MM) | Transmittance | Transmittance | Reflectance Outdoors | Reflectance Indoors | Transmittance | Reflectance | Absorption | Solar Factor EN410 | SHGC | SC | |
| 6 | 55 | 68 | 29 | 30 | 65 | 18 | 17 | 0.69 | 0.70 | 0.80 | 5.7 |

– Performance data is based on representative samples of factory production. Actual values may vary slightly due to variations in the production process.
 – Tabulated data is based on NFRC methodology using the LBL Windows 5.2 Software and where noted European methodology using WinDat WIS version 3.0.1 software.
 – SF = Solar Factor (EN410) also known as g-value.

Vistalite® Clear : Performance Data for IG Unit Glass (6mm/16mm air space/6mm)

| Vistalite® Clear + | Visible light Transmission VLT | Visible light Reflectance | | SC | Solar Factor(g) EN 410 | U-Value Imperial | | U-Value EN 673 W/m²*K |
|--------------------------|--------------------------------|---------------------------|------|------|------------------------|------------------|--------|-----------------------|
| | | Ext. | Int. | | | Winter | Summer | |
| Trulite Clear | 62% | 33% | 32% | 0.69 | 0.60 | 2.80 | 2.70 | 2.70 |
| SG 500-Hard coat Low E#3 | 58% | 34% | 31% | 0.62 | 0.56 | 1.90 | 1.80 | 1.80 |
| Single Silver Low E#3 | 56% | 33% | 29% | 0.58 | 0.50 | 1.80 | 1.60 | 1.60 |

– Data considers 16mm airspace and based on NFRC & EN 673. Other glass thickness is available. See literature or visit www.sphinxglass.com for additional values



VISTALITE® EURO GREY

Vistalite® Euro Grey: Performance Data for Monolithic Glass

| Glass Configuration | UV | Visible Light | | | | Solar Energy | | | | | U Value W/M2K |
|---------------------|---------------|---------------|----------------------|---------------------|---------------|--------------|------------|--------------------|------|------|---------------|
| Vistalite Euro Grey | % | % | % | % | % | % | % | % | % | % | |
| (MM) | Transmittance | Transmittance | Reflectance Outdoors | Reflectance Indoors | Transmittance | Reflectance | Absorption | Solar Factor EN410 | SHGC | SC | |
| 4 | 27 | 45 | 14 | 28 | 48 | 11 | 41 | 0.57 | 0.57 | 0.66 | 5.8 |
| 5 | 22 | 39 | 12 | 27 | 42 | 10 | 48 | 0.55 | 0.56 | 0.64 | 5.7 |
| 6 | 18 | 34 | 10 | 27 | 37 | 8 | 55 | 0.52 | 0.53 | 0.61 | 5.7 |
| 8 | 13 | 27 | 8 | 27 | 29 | 7 | 64 | 0.46 | 0.47 | 0.54 | 5.6 |

– Performance data is based on representative samples of factory production. Actual values may vary slightly due to variations in the production process.
 – Tabulated data is based on NFRC methodology using the LBL Windows 5.2 Software and where noted European methodology using WinDat WIS version 3.0.1 software.
 – SF = Solar Factor (EN410) also known as g-value.

Vistalite® Euro Grey : Performance Data for IG Unit Glass (6mm/16mm air space/6mm)

| Vistalite® Euro Grey + | Visible light Transmission VLT | Visible light Reflectance | | SC | Solar Factor(g) EN 410 | U-Value Imperial | | U-Value EN 673 W/m²*K |
|--------------------------|--------------------------------|---------------------------|------|------|------------------------|------------------|--------|-----------------------|
| | | Ext. | Int. | | | Winter | Summer | |
| Trulite Clear | 31% | 12% | 31% | 0.46 | 0.40 | 2.80 | 2.70 | 2.80 |
| SG 500-Hard coat Low E#3 | 29% | 12% | 30% | 0.39 | 0.34 | 1.90 | 1.80 | 1.80 |
| Single Silver Low E#3 | 26% | 14% | 28% | 0.35 | 0.31 | 1.80 | 1.60 | 1.60 |

– Data considers 16mm airspace and based on NFRC & EN 673. Other glass thickness is available. See literature or visit www.sphinxglass.com for additional values

